



MONTHLY MEMBERSHIP PROGRESS REPORT

District 321A2

Results as of: 01/31/2018

GMT: ANIL TULSYAN

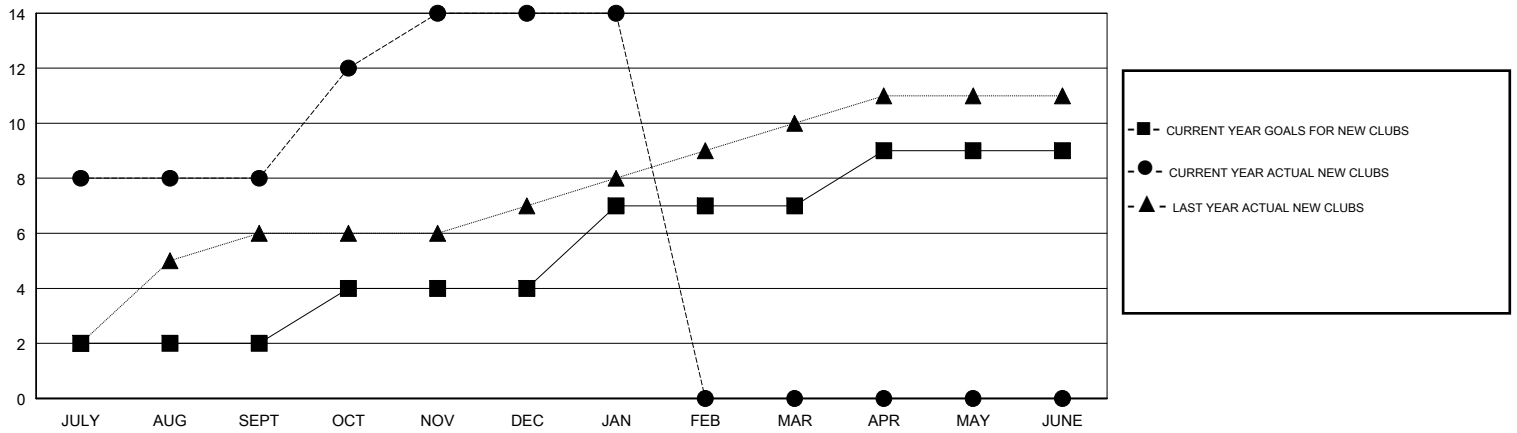
LOCATION INDIA

GMT CA

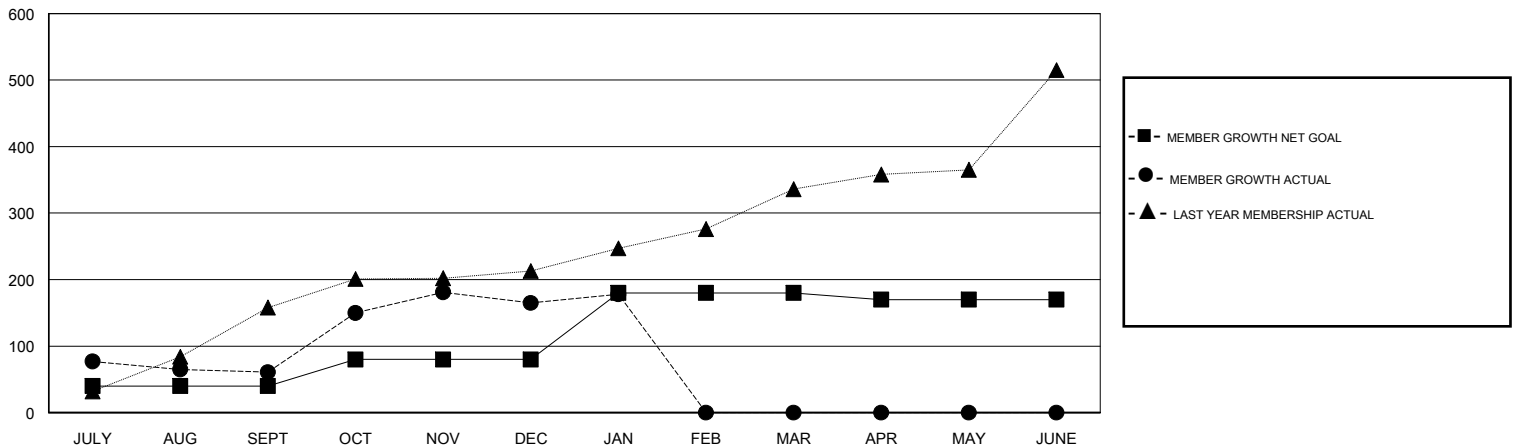
Clubs			
RESULTS FOR 2017-2018			
QUARTER	NEW CLUB GOAL	NEW CLUBS	DROPPED CLUBS
JULY/AUG/SEPT	2	8	0
OCT/NOV/DEC	2	6	1
JAN/FEB/MAR	3	0	0
APR/MAY/JUNE	2	0	0

Members			
RESULTS FOR 2017-2018			
QUARTER	MEMBER GROWTH NET GOAL	MEMBER GROWTH ACTUAL	DROPPED MEMBERS ACTUAL (including transfers)
JULY/AUG/SEPT	40	266	191
OCT/NOV/DEC	40	218	102
JAN/FEB/MAR	100	51	36
APR/MAY/JUNE	-10	0	0

GOALS AND ACTUAL NEW CLUBS CUMULATIVE



GOALS AND ACTUAL MEMBERS CUMULATIVE



DROPPED CLUBS: 1

55 CLUBS OF 115 ADDED 1 OR MORE NEW MEMBERS

GENDER DISTRIBUTION

MALE 2,471 (70.28%)
 FEMALE 1,045 (29.72%)
 Women Percentage Fiscal Year Goal: 35%

DROPPED MEMBERS

[CLICK HERE FOR CUMULATIVE MEMBERSHIP DATA](#)

DECEASED	4
CLUB CANCELLED	0
OTHER	325
TOTAL	329

TOTAL FAMILY UNIT MEMBERS	1,790
FAMILY MEMBERS PAYING HALF DUES	981